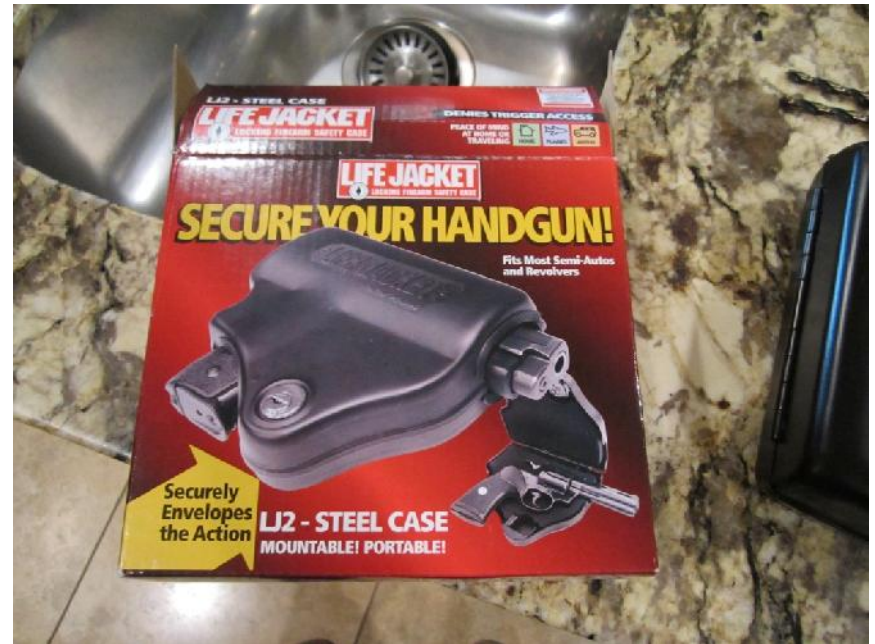


Installation of Gun Lock Case for Soft Motorcycle Bags



Soft bags on my Street Bob



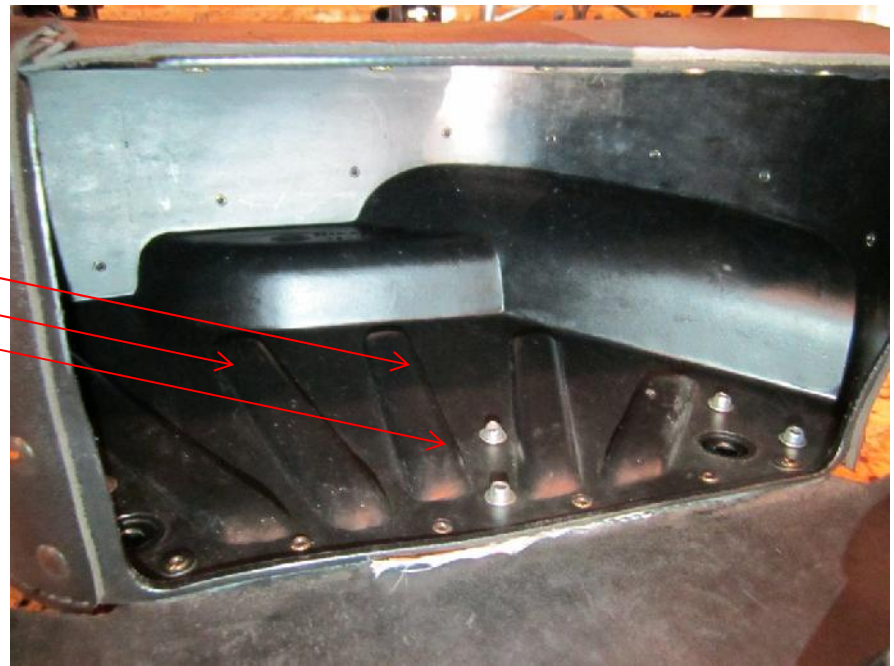
Remove the bag

- Fairly easy to unbolt from the inside of the bag



Find where you want to mount and make sure you have good clearance

- Find where you want to place the holder and mark drill holes on the bag and holder
- We used the raised ridges to mount with three locations for bolts



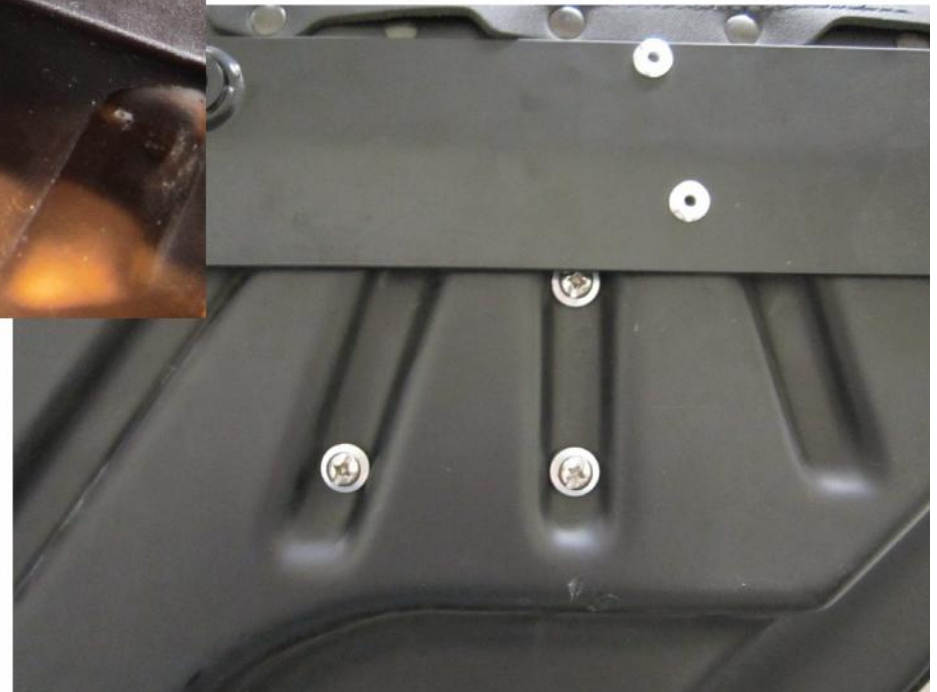
Drill the holes!



Line up and insert bolts, washers and nuts.



Inside



Outside

Replace foam then mount bag back on bike.



Happy Gun Owner 😊

